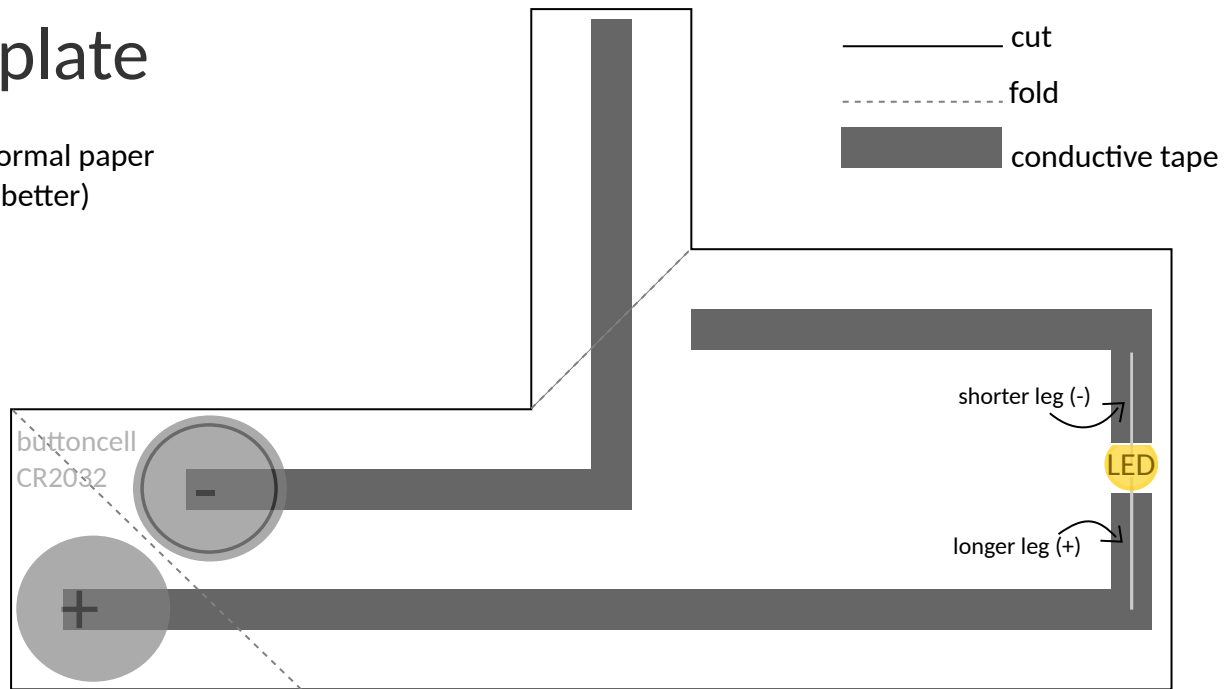
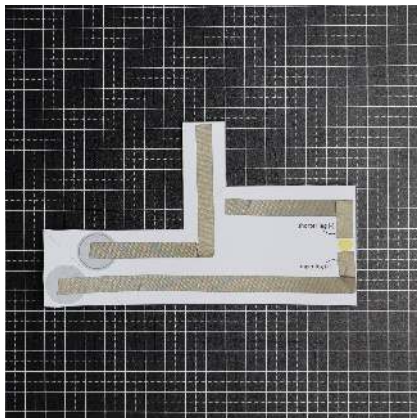


Easy Circuit Template

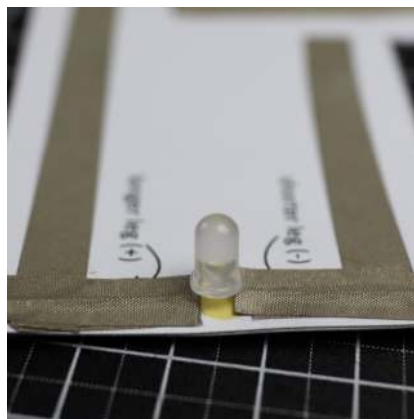
Print on normal paper
(thicker is better)



Instructions - Easy Circuit



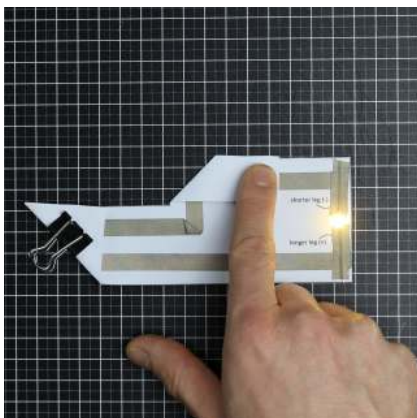
Step1: Trace circuit with conductive tape.



Step2: Stick LED legs to circuit using strips of conductive tape.



Step3: Fold flap over the battery and lock it with the paper clip (minus pole facing down).



Step4: Fold on/off switch over and try out your circuit. If it's not working: Try turning around the battery.

More detailed instructions under:
www.voltpaperscissors.com/basics

Scan me:

